

HIGH PERFORMANCE SEAMLESS,
DURABLE REPAIR & FLOOR SOLUTIONS
FOR WASTE MANAGEMENT FACILITIES



STONHARD®

STONHARD.COM



WASTE NEVER SLEEPS
AND NEITHER DO OUR
TIPPING FLOOR SOLUTIONS

AN INDUSTRY-LEADING REPUTATION YOU CAN TRUST

We know your facility relies on industry partners who can provide long-term solutions and support. We have been solving our customers' problems since 1922 where we've made history with our turnkey model of providing products, installation, and service for more than a 100 years.

Through these years of experience, Stonhard has established relationships and cultivated loyalty with customers through trusted technical engineering, real-time problem solving, and installation expertise. There's really no challenge we can't handle.



BENEFITS AT A GLANCE

- Single Source Supplier - Meaning We Are Both The Manufacturer & Installer Of Our Products So You're Dealing With One Company From Start To Finish
- High-Performance, Durable, Long-Lasting Products That Provide Tailored Solutions To Solve Your Worst Flooring Problems
- Industry Leading Surface Preparation For Longer Lasting Floors Solutions For Your Entire Facility - From Break Rooms, Washrooms, and Change Areas - We've Got You Covered!
- We Know These Facilities Are Critical; Our Industry Leading Installation Capacity Means You'll Be Up and Running Faster
- A Complete Line of Repair Materials; Resinous Grouts, Patching and Infill For Badly Damaged Concrete
- Ultra Tough Polyurethanes Dramatically Outlast Original Concrete or Cementitious Toppings Leading To A More Cost Effective Facility To Maintain
- Low Dust and Solvent Free For Unparalleled Safety During Installation For Your Employees and Ours
- Expert Installation By Our Certified & Experienced In-House Technical Crews
- Single-Source Warranty

WHY CHOOSE STONHARD?

HIGH-PERFORMANCE, ENGINEERED SOLUTIONS THAT ARE DURABLE, IMPACT AND CHEMICAL RESISTANT

In 1922, a small company had an idea; a patch-and-repair business to help plant managers fix floors and keep factories running – and the foundation for Stonhard was established. When facility managers began to recognise the value of preventative maintenance, Stonhard said, “We’ll do it for you.” This turnkey model of taking responsibility for both products and installation became “The Stonhard Difference”.

Stonhard went from a business to a brand; a trusted global brand that solved problems for industrial and commercial facilities. We take a customised approach to your facility; taking careful consideration of the installation environment, substrate, and operating conditions to ensure the proper product selection. We recommend flooring systems that will give you the most cost-effective, long-lasting solutions for your facility.



LET'S TALK DETAILS

Proper surface preparation is the most important step of any seamless flooring installation project. Poor substrate preparation is a leading cause of floor failures, therefore this first step is a vital component to any new build or replacement flooring project.

It is important to evaluate the substrate at the very beginning stages to avoid any potential problems or failures. Issues to be aware of include cracks, gouges, ponding water, holes, and any signs of deterioration. The appropriate surface preparation methods used will vary depending on substrate, environment and intended use. Stonhard's fleet of preparation equipment is ready to ensure that your new floor stays exactly where it is supposed to be – well-bonded and protecting your facility.

OUR TURNKEY APPROACH

Our single source approach is Stonhard's pledge of responsibility, with our warranty covering both material and labour. Our Territory Managers are dedicated to your satisfaction. Site supervision and service are standard across the country and around the world.

A turnkey approach means you'll receive high quality products and installations direct from the manufacturer. From people to products and services, quality and dependability are a constant with Stonhard.

WE KNOW AND UNDERSTAND YOUR CONCERNS

CORROSIVE CHEMICALS

Modern waste management facilities are exposed to extreme surface corrosion due to an increased concentration of organic acids; add in heavy loads, impact damage and extreme abrasive wear and tear and the durability of your floor is more important than ever. These corrosive elements also act as an additional abrasive compound and as residual moisture evaporates, trapped materials increase in concentration, becoming even more corrosive. It's possible in extreme situations that as much as 2.5-5 cm of material could be lost in a single year.

Stonhard's ultra-tough polyurethane solutions are completely resistant to attack from organic acids, protecting your facility day after day.

STRUCTURAL DAMAGE

When your facility is exposed to extreme abrasion and chemical attack, the structural integrity of the concrete slab itself becomes compromised. Once underlying steel reinforcement becomes exposed, new issues develop, especially if exposed reinforcement starts to get snagged and pulled out of the floor by material handling equipment.

Cutting out reinforcement does not help with structural integrity!

Damaged and exposed reinforcement is of particular concern in suspended slabs, where the potential for structural collapse must be mitigated.

The systems Stonhard has engineered for your facility protect the surface of your concrete, allowing you to operate your facility without safety risks, or costly shutdowns.



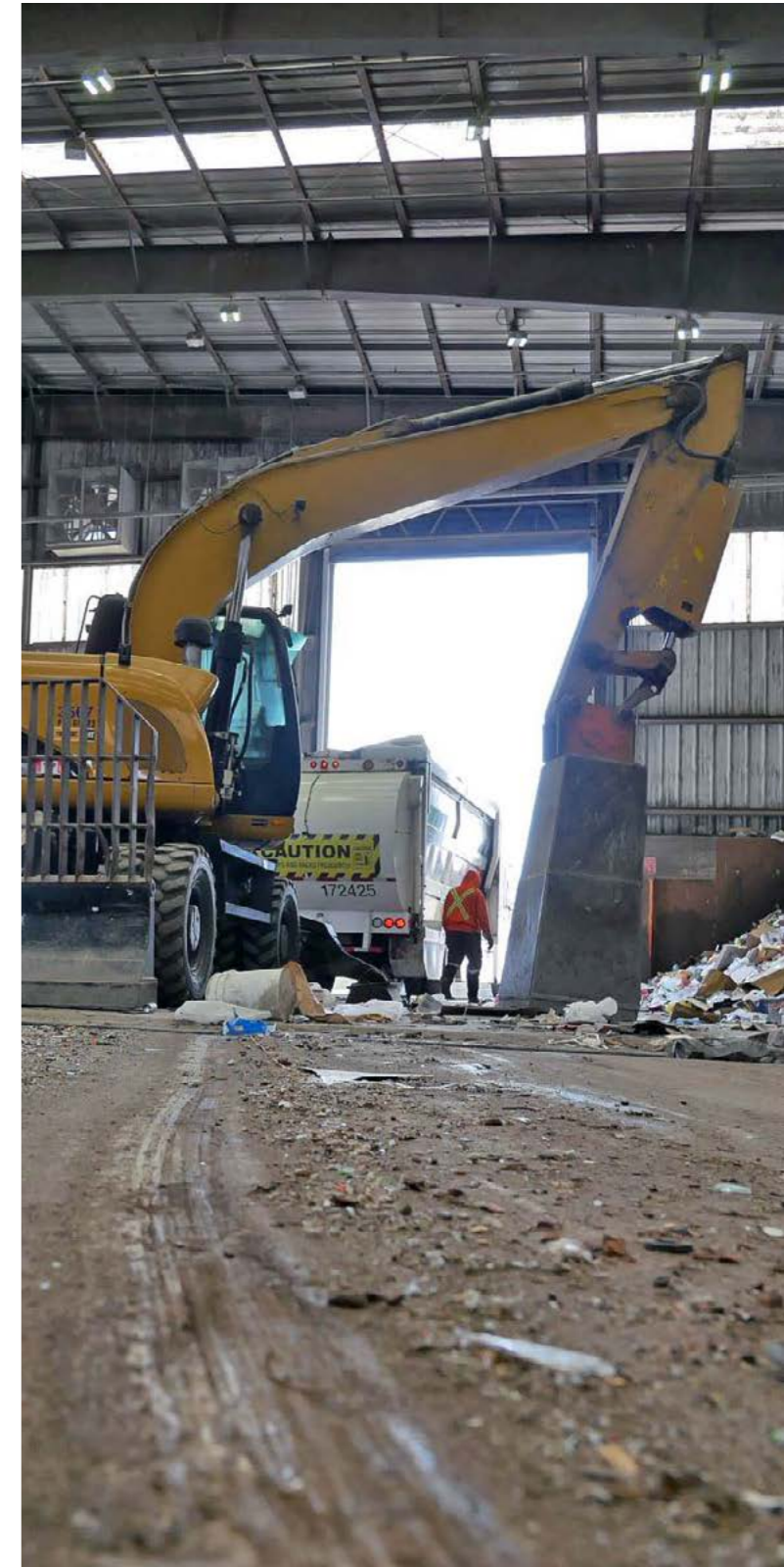
EXTREME DUTY PRODUCTS

Stonhard offers products that stand up to extreme conditions, by offering properties that are wear, abrasion, impact and chemical resistant, and are installed as a seamless floor over concrete eliminating the need to tear up the existing concrete. Stonhard's unique built-in wear indication installation process means that you can easily identify when your system should be refreshed prior to any damage to the underlying concrete.

When repairs are inevitably required in the future, these can then be quickly and easily applied to the well-bonded base layer. With a dense polyurethane mortar system that's designed to resist chemical attack and end user damage, it provides an ideal base for any floor subjected to extreme conditions. For an added protective barrier, the system can be sealed and unlike cement-based systems, it does not require extended cure times before returning to service.

TO REPAIR OR REPLACE? THAT IS THE QUESTION

Not ready for a floor to be replaced yet? We can help. Stonhard has developed the ultimate solution for heavy-duty floor repairs using our premium polyurethane binder technology that's designed to resist chemical attack in combination with one of the worlds toughest aggregates, aluminum oxide. The result is quick-curing localized repairs that get you back up and running until you're next planned shutdown.



KEY FEATURES OF OUR TECHNICALLY-ADVANCED FORMULATIONS

CHEMICAL RESISTANT

Designed to perform in the harshest environments, chemical resistant flooring provides long-lasting protection against aggressive substances.

In waste storage facilities, continuous exposure to leachates, acids, alkalis, and petroleum-based compounds demands superior resistance. Advanced flooring systems create a durable barrier that protects the substrate and prevents harmful contaminants from penetrating into the soil and groundwater.

IMPACT RESISTANT

Engineered to absorb and withstand heavy impacts, these flooring systems perform reliably under demanding conditions.

Falling waste, heavy equipment, and dynamic loads are part of everyday operations in waste facilities. Impact resistant solutions minimise the risk of cracks and structural damage, ensuring long-term performance and safety.

ANTI-SLIP

Safety comes first with high-performance slip resistant surfaces.

Exposure to moisture, oils, and waste by-products can create hazardous conditions. Specially designed textures and finishes enhance grip, reducing the risk of slips and ensuring a safer working environment for both personnel and equipment.

ABRASION RESISTANT

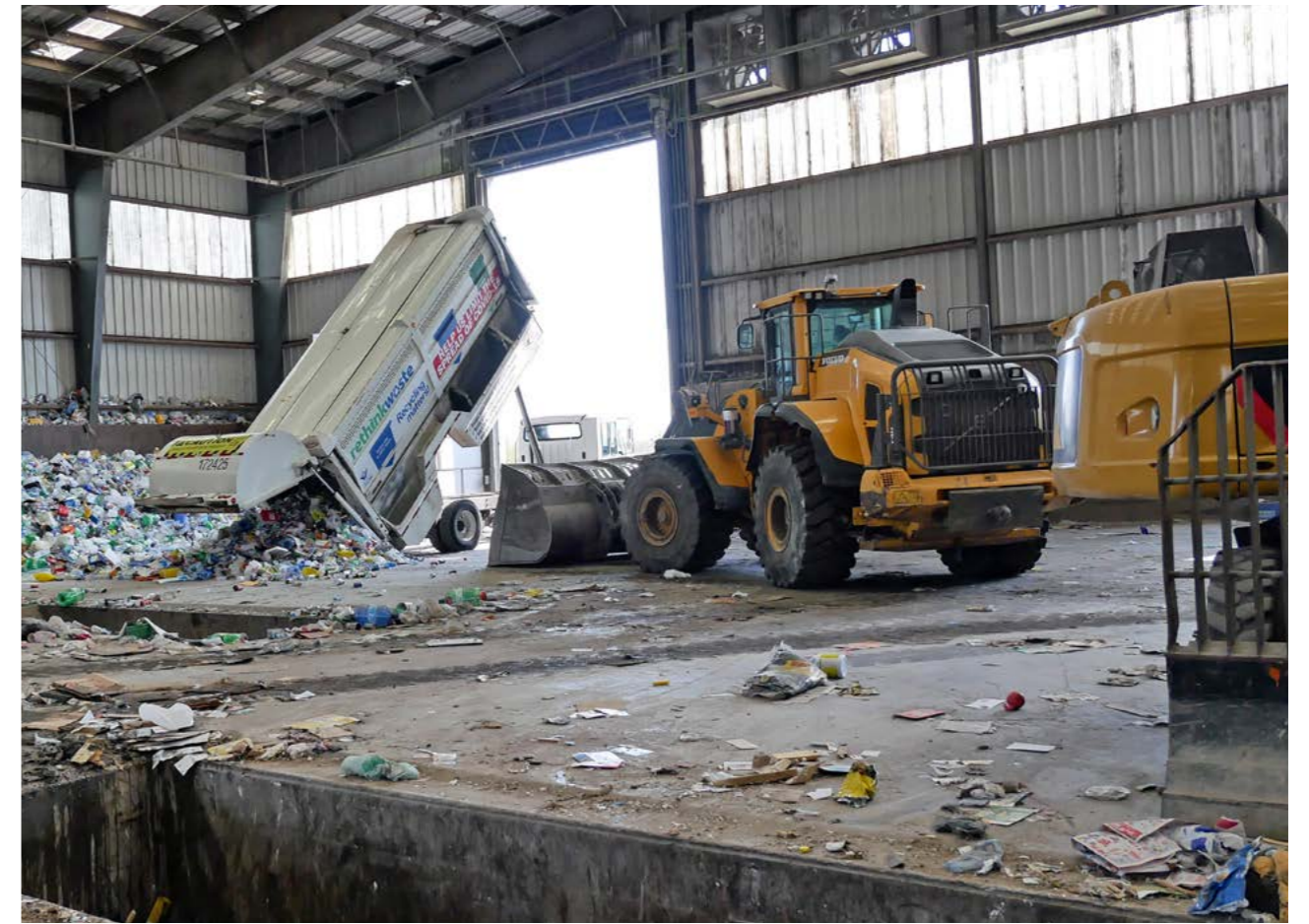
Built for extreme durability, abrasion resistant systems are engineered to withstand the toughest operational conditions.

Constant movement of heavy machinery, waste transport, and contact with abrasive materials require surfaces that can endure intensive wear. High-performance flooring maintains its integrity, reducing maintenance and extending service life.

EASY TO REPAIR

Designed with efficiency in mind, these systems offer fast and cost-effective maintenance solutions.

Thanks to superior surface preparation and strong adhesion, the flooring can be easily refurbished or overlaid without full removal. This eliminates costly demolition and significantly reduces downtime, keeping operations running smoothly.



OUR BUILT-IN WEAR INDICATORS
NOTIFY YOU VISUALLY WHEN IT'S TIME
TO REPLACE OR REPAIR YOUR FLOORING,
SAVING YOU TIME & MONEY.



PRODUCT BREAKDOWN

Upper sealed wear layer at 9.5 mm, filled with aluminum oxide to provide ultimate wear and abrasion resistance, and durability.

Lower and middle layers each 9.5 mm, also filled with aluminum oxide, in different colour to show you when you have worn through the upper surface, allowing you time to plan for preventative maintenance prior to corrosive compounds attacking the underlying concrete.

STONCLAD UT-AF, AN ENGINEERED SOLUTION FOR TIPPING FLOORS AND WASTE TRANSFER AREAS WITH A BUILT-IN, 3-LAYER, COLOUR-CODED PROTECTION WARNING

Stonhard developed a tailored solution for the waste management industry, designed to protect concrete in extreme conditions while eliminating the need to replace existing pitted surfaces.

HOW DOES STONCLAD UT-AF PROTECT TIPPING FLOORS AND WASTE TRANSFER AREAS?

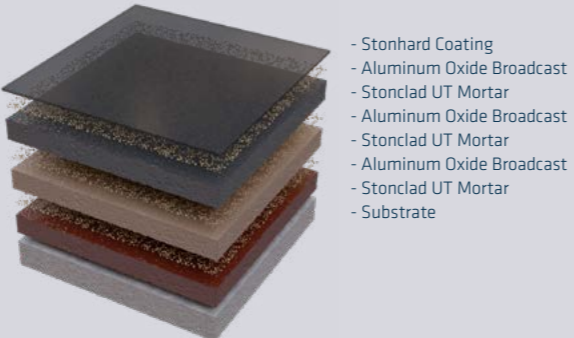
Areas in direct contact with green waste are often subjected to continuous chemical attack, impact, and abrasion and require protection to maintain efficient operations. Stonclad UT-AF, a five-component, dense, liquid-rich, textured polyurethane mortar system uses a unique blend of urethane-urea binder, pigments, and ultra-tough aluminum oxide aggregate. The system is then sealed with Stonkote HT4 to lock in the aggregates and provide an additional layer of wear resistance. Unlike concrete systems, Stonclad UT-AF does not require extended cure times before returning to service.



FASTER SERVICE AT YOUR FINGERTIPS

We know that there's no downtime in today's modern waste streams with an endless flow of waste, green waste and recyclables. We understand your need for quick turnarounds to eliminate downtime at your facility. From effective communication to products to problem solving and installation, Stonhard offers faster speed of service so we can get in and out within your tightest schedules.

Stonclad UT-AF is applied in three mortar layers which are 28 mm thick in total, using three separate colours that indicate when the surface is wearing through. When the gray top layer wears thin, the tan middle layer will begin to show through. When the red base layer appears, it is time to contact your Stonhard Territory Manager to re-apply Stonclad UT-AF for maximum protection. This three-layer model is an unmatched, long-term solution for tipping floors and waste transfer areas.





STONHARD IS MORE THAN JUST FLOORS!

Other Stonhard Engineered Solutions Offered:

- CFRP (Carbon Fibre Reinforced Polymers)
 - High performance and reliable composite material for repairing and strengthening damaged concrete structures.
- Concrete restoration coatings for push walls.
- Chemical and abrasion resistant lining systems for digestors.
- Durable joint sealing and caulking materials.

LET STONHARD HELP FIND AND INSTALL THE RIGHT FLOOR FOR YOUR FACILITY

Choosing the right seamless floor for your environment is key. Stonhard will ensure your floor will meet both the design and functional requirements of your facility. You will work with knowledgeable salespeople, architectural & engineering and design teams to identify the right system for your tipping floor.

Once installed, your floor will serve the unique needs of your business and support its success for many years.



DURABLE FLOORING SOLUTIONS YOU CAN COUNT ON

When you partner with Stonhard for sorting facility solutions, you can count on long-lasting, high-performance floors that enhance efficiency and support your operations. Our seamless floors stand up to continuous wear from impact, abrasion, chemicals, and contaminants, and we work with your schedule to meet deadlines.

With more than a century of experience in manufacturing and installing seamless floors, Stonhard has consistently demonstrated the ability to deliver durable, reliable, and safe products. We're committed to our relationship with you, meeting your deadlines and upholding your high standards.

HIGH-PERFORMANCE PRODUCTS
 LOCAL, SINGLE POINT OF CONTACT
 COMPLETE PROJECT MANAGEMENT
 WARRANTY ON PRODUCTS & INSTALLATION

THE STONHARD DIFFERENCE

More than a century solving customers' problems, one point of contact, direct sales with complete design support, project management, technical support and global accounts. No matter where you are in the world, the end result is the same - consistent products and installation.



STONHARD®

STONHARD.COM

